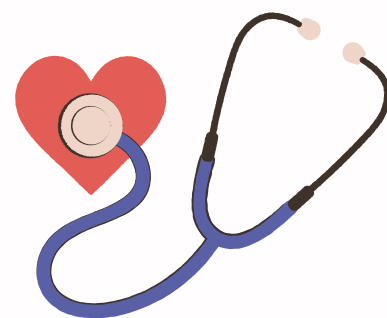




SPA 5 & 6 Early Connections Monthly Newsletter (Family, Infant, & Child Health)

Greetings Partners,

This is the June '25 SPA 5 & 6 Early Connections (Family, Infant, & Child Health) Newsletter. This newsletter highlights local resources and information for families and children.



June is Alzheimer's & Brain Awareness Month ([LINK](#))

- Worldwide, more than 55 million people are living with Alzheimer's or another dementia.
- Get familiar with brain health and learn what steps you can take if you or someone you love has memory concerns.
- Incorporate some or all of these [10 Healthy Habits](#) into your life and share them with someone you know.

National Gun Violence Awareness Day - June 6, 2025 ([LINK](#))

- We #WearOrange to demand a future free from gun violence
- Together, we will remember the millions of lives stolen or impacted by gun violence and take action in their honor.

Juneteenth ([LINK](#))

- On June 19, 1865, Union troops freed enslaved African Americans in Galveston Bay and across Texas some two and a half years after President Abraham Lincoln signed the Emancipation Proclamation.



Important Information

Help Me Grow LA helps families find services that can support their child's development.
Call (833) 903-3972 or visit [HelpMeGrowLA.org](https://www.HelpMeGrowLA.org)

Refer Your Friend or Family to Head Start

Do you have a friend or family member that can benefit from Early Head Start or Head Start? Have them call 1-877-Pre-K-Kid today!

12x

Black Americans are 12 times **more likely** than white Americans to **die by gun homicide.**

wearorange.org

CDC, WONDER, Underlying Cause of Death, 2019-2023.

Generations of systemic inequities, racial discrimination, and disinvestment have intensified gun violence in Black communities—leaving lasting impacts on countless lives.

Generaciones de desigualdades sistémicas, discriminación racial y desinversión han intensificado la violencia con armas en las comunidades Afroamericanas, dejando innumerables vidas cambiadas.

12x

Afroamericanos son 12x **más probables** de ser **asesinados con un arma de fuego** en comparación a los estadounidenses blancos.

wearorange.org

CDC, WONDER, Underlying Cause of Death, 2019-2023.

5,300

In **Latino communities**,
gun violence takes
nearly 5,300 lives
every year.

wearorange.org

CDC, WONDER, Underlying Cause of Death, 2019-2023.

Fueled by discriminatory policies and hateful rhetoric, Latino communities face disproportionate rates of gun violence in the US.

Las comunidades Latines enfrentan tasas de violencia armada desproporcionadas en los Estados Unidos impulsadas por políticas discriminatorias y retórica de odio.

5,300

En **las comunidades latines**, la violencia con armas de fuego roba casi 5,300 vidas **cada año.**

wearorange.org

CDC, WONDER, Underlying Cause of Death, 2019-2023.



Media Mentors

JOIN US!

Join us for a relevant workshop designed to help parents and caregivers confidently navigate today's ever-changing digital landscape. We'll introduce key concepts like media mentorship and "co-viewing," provide developmentally-appropriate guidelines for screen time, and offer practical tools and resources to help you select and evaluate meaningful media for your children.

This workshop is tailored for an adult-only audience, ensuring a focused, informative experience as you learn to guide your family through the world of digital media effectively.

Wednesday, June 11 | 12 PM - 1 PM



[Register Here](#)





Guía de medios educativos

¡ÚNETE A NOSOTROS!

Únete a nosotros en un taller relevante diseñado para ayudar a padres y cuidadores a navegar con confianza el panorama digital actual.

Introduciremos conceptos clave como guía de medios y uso compartido (co-viewing), proporcionaremos pautas apropiadas para el desarrollo para el tiempo frente a la pantalla y ofreceremos recursos prácticos para ayudarte a escoger y evaluar medios significativos para tus hijos.

Este taller está diseñado para un público solo para adultos, lo que garantiza una experiencia informativa y enfocada a medida que aprende a guiar a su familia a través del mundo de los medios digitales de manera efectiva.

Miercoles, 11 de junio | 12 - 1 PM



[Registrar Aquí](#)





WEST COUNTY
GAIN REGION I

Summer

Job Fair

Thursday, June 26, 2025

9:00am – 12:00pm

West County GAIN Region I

5200 W. Century Blvd, Los Angeles, CA 90045



Come ready to interview!
Bring Right-to-Work documents,
Valid ID/DL, & SSN Card.
Dress professionally & bring
your resume!

For more information contact
Robert at (424) 414-5223





Help Me Grow LA is Hiring Family Partners!

FAMILY PARTNER ROLE

- Support and partner with parents as they navigate systems and services for children with special needs
- Provide information, referral, technical assistance, and training for parents of children with special health needs
- Participate in and/or lead Parent Café and HMG LA Coalition meetings
- Recruit parent leaders for the Parent-to-Parent program and promote the development of emerging parent advocates and leaders

JOB REQUIREMENTS

- Lived experience parenting a child with special needs, disabilities, or chronic illness
- Two years of experience as a parent representative, parent advocate or parent leader in a human or health service program serving children or families.
- Excellent interpersonal, written and verbal communication skills
- Empathy for families from diverse race/ethnic backgrounds and experiences
- Ability to establish trust with partners across different sectors serving families
- CHW Certification or commitment to completing a CHW certificate program within 1 year of hire
- Valid Class C California Driver's License or the ability to utilize an alternative method of transportation

IT'S ALSO HELPFUL IF YOU HAVE:

- Experience with early identification and intervention
- Experience with data entry, data collection, and/or record keeping using software
- Experience providing culturally affirming support to individuals communities who are from the various cultures/ethnicities prevalent in LA County, including those most impacted by health disparities, such as African American and Native communities.
- Fluency in English and another language (e.g., Arabic, Armenian, Cambodian, Cantonese/Mandarin, Farsi, Korean, Russian, Spanish, Tagalog, and Vietnamese). Fluency in multiple languages is not a required qualification.

APPLY NOW--CLICK HERE!

bit.ly/lafamilypartner



Part-time position (up to 25 hours/week)



Flexible shifts



Salary: \$25.51/hr



Benefits: Sick time accrual



Location TBD in a Service Planning Area

Market Match



What Is Market Match?

Market Match is a CA-based incentive program that helps you purchase more fruits and veggies when using CalFresh at farmer's markets! Get extra funds to spend on healthy food!

dpss.lacounty.gov



Perks of CalFresh



Utility Savings

Save money on utility bills! Phone services, internet services and other essential services offer discounts and waivers for eligible CalFresh/EBT users!

dpss.lacounty.gov





CALFRESH RESTAURANT MEALS PROGRAM (RMP)



Disabled? Homeless? Unable to cook?
#RMP lets you buy healthy, prepared meals
at over 1,300 participating restaurants!

Learn more at <https://dpss.lacounty.gov/en/food/meals.html>.

dpss.lacounty.gov



Are you expecting a baby? Are you growing a family? **Grow your village of support! Because you deserve** **a healthy and joyous birth.**

Come claim your joy with the African American Infant and Maternal Mortality Prevention Initiative. At our KJLH Women's Health Expo booth, you can meet your AAIMM village and learn about doula services, dad groups, special events, pregnancy tips, and other no-cost resources for Black families.

If you're a friend, neighbor, provider, relative, or a concerned member of the community, we'll have plenty for you too. Don't miss our Purple Couch Panel Discussions and our welcoming breast/chestfeeding and diaper changing station for families.

It's time to be a village of support for Black infants and families. The LA County AAIMM Prevention Initiative is a partnership of the LA County Department of Public Health, First 5 LA, and health and community leaders to stand together against racism and the unjust rates of Black infant and mom deaths in LA County.

Visit blackinfantsandfamilies.org.



**AFRICAN AMERICAN INFANT
AND MATERNAL MORTALITY
PREVENTION INITIATIVE**
BlackInfantsAndFamilies.org



fb.com/BlackInfantsAndFamilies



[@BlackInfantsAndFamiliesLA](https://www.instagram.com/BlackInfantsAndFamiliesLA)





Community Resource Center

<https://www.communityresourcecenterla.org>

LA Care Community Resource Centers offer free in-person classes and services to help keep the community active, healthy and informed.

Locations (in SPA5 &6):

- [West LA Center](#)
- [Lynwood](#)
- [South LA](#)

On-Demand Classes

Youtube: Community Resource Centers
([LINK](#))

Free CPR Classes

The Critical Care Training Center is offering CPR classes. If you're interested in earning a CPR certification, please click this link to find the classes closest to you: <http://tinyurl.com/mrxpj9t5>. All classes are free and are in both English and Spanish.



Rapid Response Senior Meal Program

[The City of Los Angeles Department of Aging Rapid Response Senior Meals Program \(RRSMP\) is now open for enrollment.](#) The RRSMP offers (5) home-delivered meals weekly to individuals 60+ in the City of Los Angeles, prioritizing those with the most significant economic and social needs.

To sign up: <http://tinyurl.com/54whawar>

To check if you are within LA City limits: <http://tinyurl.com/4jk82dmn>



FREE CPR CLASSES!

Metro LA

1233 S. Western Ave. Los Angeles, CA 90006

213.428.1457

1st, **2nd** Monday of month @ 2pm

East LA

4801 E. Whittier Blvd. Los Angeles, CA 90022

213.438.5570

2nd, **4th** Thursdays of month @ 10am

El Monte

3570 Santa Anita Ave. El Monte, CA 91731

213.428.1495

2nd, 3rd, 4th Tuesdays of month @ 1pm

Wilmington

911 N. Avalon Blvd. Wilmington, CA 90744

213.428.1490

1st (Online) **3rd** Wednesday of month @ 2pm

Lynwood

3200 E. Imperial Hwy. Lynwood, CA 90262

310.661.3000

1st Saturday & 1st, 2nd, **3rd** Friday of month @ 10am

Pomona

696 West Holt Ave. Pomona, CA 91768

909.620.1661

1st, **3rd** Thursday of month @ 12pm

West LA (ONLINE)

11173 Pico Blvd. Los Angeles, CA 90064

310.231.3854

3rd Saturday & **3rd** Wednesday of month @ 9am

Lincoln Heights (ONLINE)

2430 N. Broadway,
Los Angeles, CA 90031

213.294.2840

1st, **2nd** Saturdays of month @ 9am
2nd Tuesday of month @ 9am

Panorama City

7868 Van Nuys Blvd.
Panorama City, CA 91402

213.438.5497

1st, **3rd** Friday of month @ 8am & 2nd Saturday of month alternating English & Spanish

South LA

5710 Crenshaw Blvd.
Los Angeles, CA 90043

213.428.1410

3rd Monday of month @ 9:30am & **1:30pm**
4th Tuesday of month @ 9am

Norwalk

11721 Rosecrans Ave
Norwalk, CA 90650

562.651.6060

1st Tuesday of month @ 10am & 4th Friday of month @ 12:30pm

Inglewood

2864 W. Imperial Hwy.
Inglewood, CA 90303

310.330.3130

1st Monday of month @ 12:30pm
4th Saturday of month @ 9:30am

Palmdale

2072 E. Palmdale Blvd
Palmdale, Ca 93550

213.438.5580

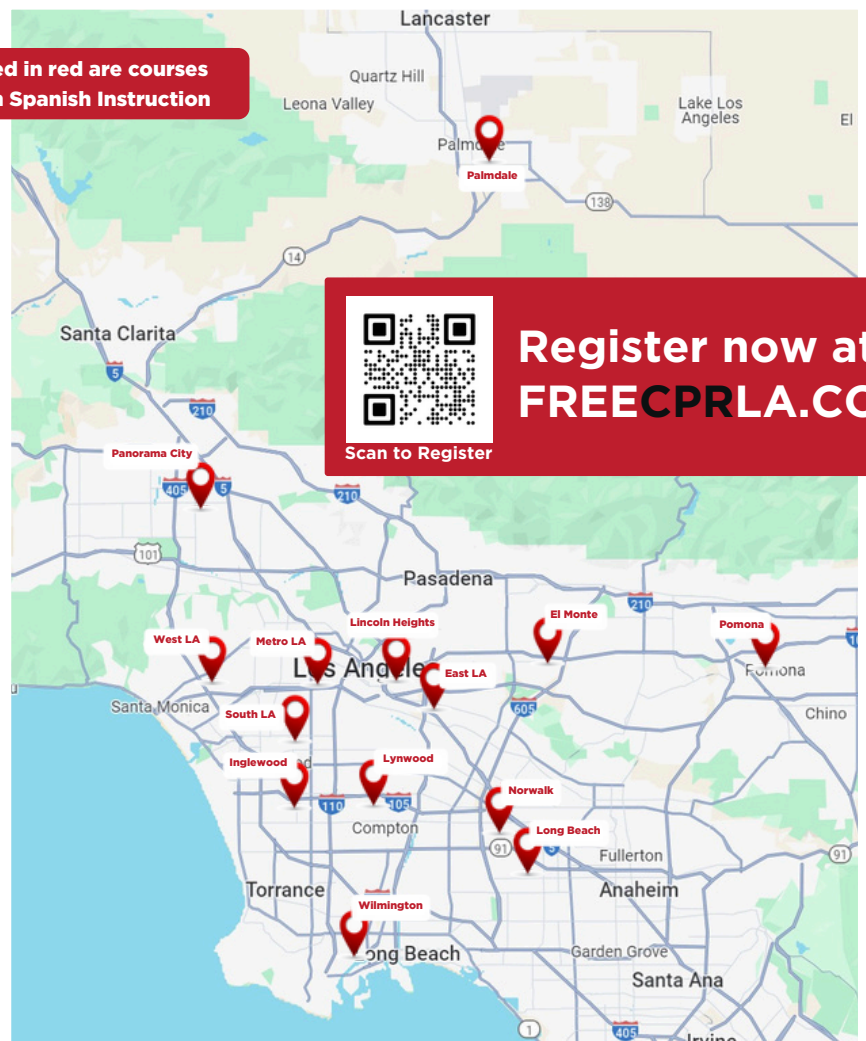
1st, **2nd** Friday of month @ 10:15am

Long Beach

5599 Atlantic Ave.
Long Beach, CA 90805

562.256.9810

2nd, **4th** Monday of month @ 9:30am



Days labeled in red are courses
provided in Spanish Instruction



Scan to Register

Register now at
FREECPRLA.COM

CLASE DE RCP GRATUITA!

Metro LA

1233 S. Western Ave. Los Angeles, CA 90006

213.428.1457

1er, 2do lunes del mes @ 2pm



Las fechas marcadas en rojo
son los cursos ofrecidos en español

East LA

4801 E. Whittier Blvd. Los Angeles, CA 90022

213.438.5570

2do y 4to jueves del mes @ 10am

El Monte

3570 Santa Anita Ave. El Monte, CA 91731

213.428.1495

2do, 3ro, 4to martes del mes @ 1pm

Wilmington

911 N. Avalon Blvd. Wilmington, CA 90744

213.428.1490

1er (en línea), 3er miércoles del mes @ 2pm

Lynwood

3200 E. Imperial Hwy. Lynwood, CA 90262

310.661.3000

1er sábado & 1er, 2do, 3er viernes del mes @ 10am

Pomona

696 West Holt Ave. Pomona, CA 91768

909.620.1661

1er, 3er jueves del mes @ 12pm

West LA (Online)

11173 Pico Blvd. Los Angeles, CA 90064

310.231.3854

3er sábado, 3er miércoles del mes @ 9am

Lincoln Heights (ONLINE)

2430 N. Broadway,
Los Angeles, CA 90031

213.294.2840

1er, 2do sábado del mes @ 9am
2do martes del mes @ 9am

Panorama City

7868 Van Nuys Blvd.
Panorama City, CA 91402

213.438.5497

1er, 3er viernes del mes @
8am & 2do sábado del mes
alternando inglés y español

South LA

5710 Crenshaw Blvd.
Los Angeles, CA 90043

213.428.1410

3er lunes del mes
@ 9:30am y 1:30pm
4to martes del mes @ 9am

Norwalk

11721 Rosecrans Ave
Norwalk, CA 90650

562.651.6060

1er martes del mes @ 10am 4to
viernes del mes @ 12:30pm

Inglewood

2864 W. Imperial Hwy.
Inglewood, CA 90303

310.330.3130

1er lunes del mes @ 12:30pm
4to sábado del mes @ 9:30am

Palmdale

2072 E. Palmdale Blvd
Palmdale, Ca 93550

213.438.5580

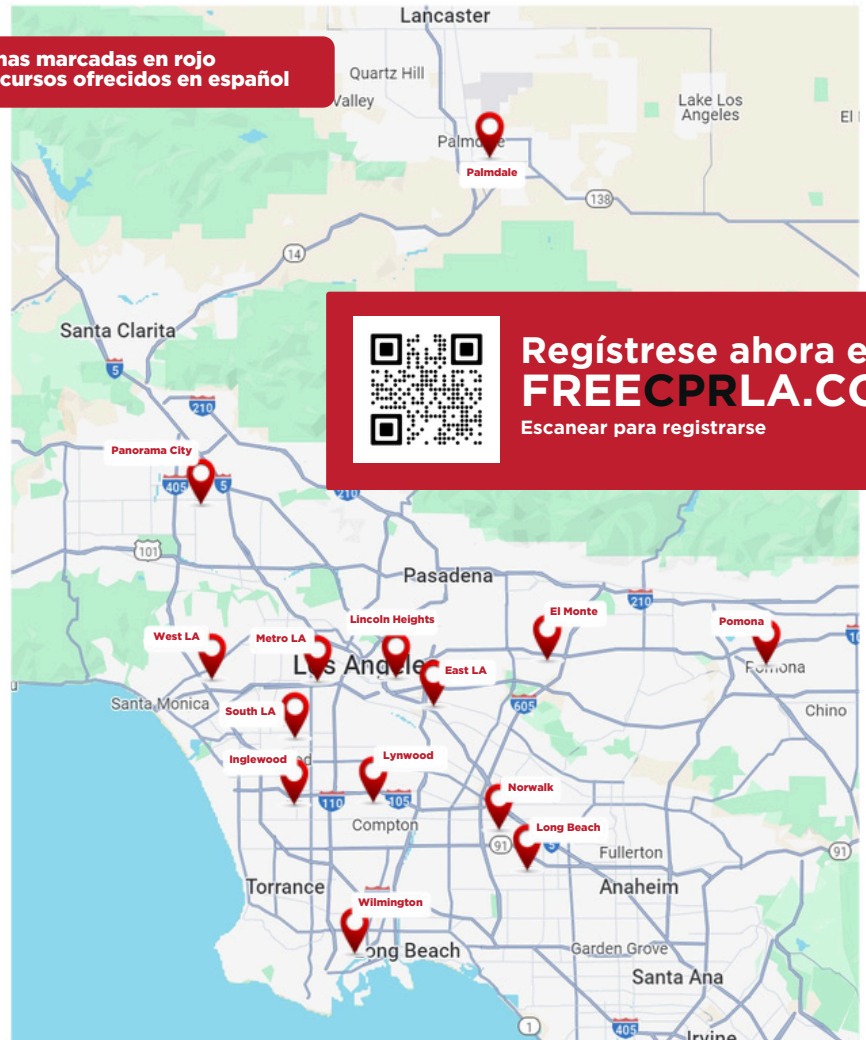
1er, 2do viernes del
mes @ 10:15am

Long Beach

5599 Atlantic Ave.
Long Beach, CA 90805

562.256.9810

2do, 4to lunes del
mes @ 9:30am





Who Do I Call for Help?

9-1-1

to report crimes, fires, and medical emergencies when law enforcement, firefighters, or paramedics are needed



800-854-7771

for crisis response teams in the field or mental health and substance use resources through the 24/7 LACDMH Help Line



LOS ANGELES COUNTY
DEPARTMENT OF
MENTAL HEALTH
hope. recovery. wellbeing.

9-8-8

for support with suicidal crisis or mental health-related distress



988 | SUICIDE & CRISIS
LIFELINE

2-1-1

for general information on local resources or linkages and referrals to health, human, and social services



CONNECTING LOS ANGELES COUNTY



¿A Quién Llamo para Pedir Ayuda?

9-1-1

para reportar delitos, incendios y emergencias médicas cuando se necesitan agentes de la policía, bomberos, o paramédicos



800-854-7771

para equipos de respuesta rápida a crisis en la comunidad o recursos de salud mental y uso de sustancias a través de la línea de ayuda LACDMH disponible 24/7.



LOS ANGELES COUNTY
DEPARTMENT OF
MENTAL HEALTH
hope. recovery. wellbeing.

9-8-8

para apoyo en crisis de suicidio o dificultades relacionadas con la salud mental



988 | SUICIDE & CRISIS
LIFELINE

2-1-1

para obtener información general sobre recursos locales o vínculos/enlaces y referencias a servicios de salud, servicios humanos y sociales



CONNECTING LOS ANGELES COUNTY